

M

Gallery 16  
Lowry and Valette

**Parents and Carers**  
Please remember that gallery staff cannot supervise your children. You should stay with them at all times for their safety.

**Crossing the Bo**  
201

A project by the Yee Yee Society

The project displays the historical project by the Yee Yee Society, which was established in 1950 to support the cultural and artistic development of the Chinese community in Manchester. The project is a collaboration between the Yee Yee Society and the Manchester Art Gallery, and it features a series of artworks and installations that explore the history and culture of the Chinese community in Manchester.

Crossing the Bo is a project that explores the history and culture of the Chinese community in Manchester. The project is a collaboration between the Yee Yee Society and the Manchester Art Gallery, and it features a series of artworks and installations that explore the history and culture of the Chinese community in Manchester.

G

# Events at Manchester Art Gallery

Beautiful architecture. Light filled spaces. Home to one of the country's finest collections of art, design and fashion.

Conveniently located in the heart of the city, and with inhouse catering and a dedicated team ready to tailor packages to suit your needs, hosting your event at Manchester Art Gallery is hassle free.

Gallery 16 is an elegant gallery space, originally part of the Manchester Athenaeum, and is the perfect backdrop for a variety of events. Lining Galley 16 are artworks illustrating iconic views of Manchester by famed local artists, L.S. Lowry and Adolphe Valette. Available for exclusive hire, this is a versatile and striking space, ideal for presentations, networking events, and intimate dinners.

The adjoining Gallery 14 is home to our collection of works by Dutch artists and offers a contrasting space, perfect for networking and pre-dinner drinks receptions.

Offer your guests something different and show them the very best of Manchester!

**Full day hire (9am-5pm) - £2,500**

*Audio-visual equipment available. Quotes provided on request*



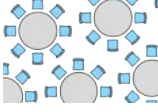


*Breakout spaces available at an additional cost. These can be provided upon request*

**Evening hire (6-8pm) - £2,150**

**(6-10pm) - £3,000**

*Extend your hire time for an additional £750 per hour, available until 11pm*

*Hire additional spaces for your evening event for £695 per space*

	Boardroom	30
	Cabaret	42
	Dining	60
	Theatre	120
	Drinks reception	150



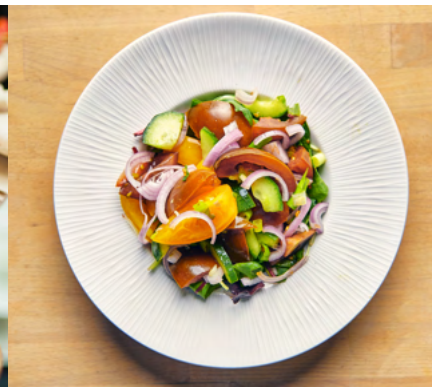
# Catering

Our talented catering team have designed exciting and seasonal menus to suit a variety of events, ensuring all dishes match the stunning surroundings. From working lunches to canapés and three-course meals, all our food is freshly prepared for you and your guests and is complemented by a range of sustainably sourced drinks.

**Canapés** - £12.50 choice of three per person  
**Bowl food** - £26.50 choice of three per person  
**Three-course dinner** from £55.00 per person  
View our sample menu [here](#)

House wine from £25.00 per bottle  
Sparkling wine from £30.00 per bottle

*All prices exclude VAT and are subject to change*

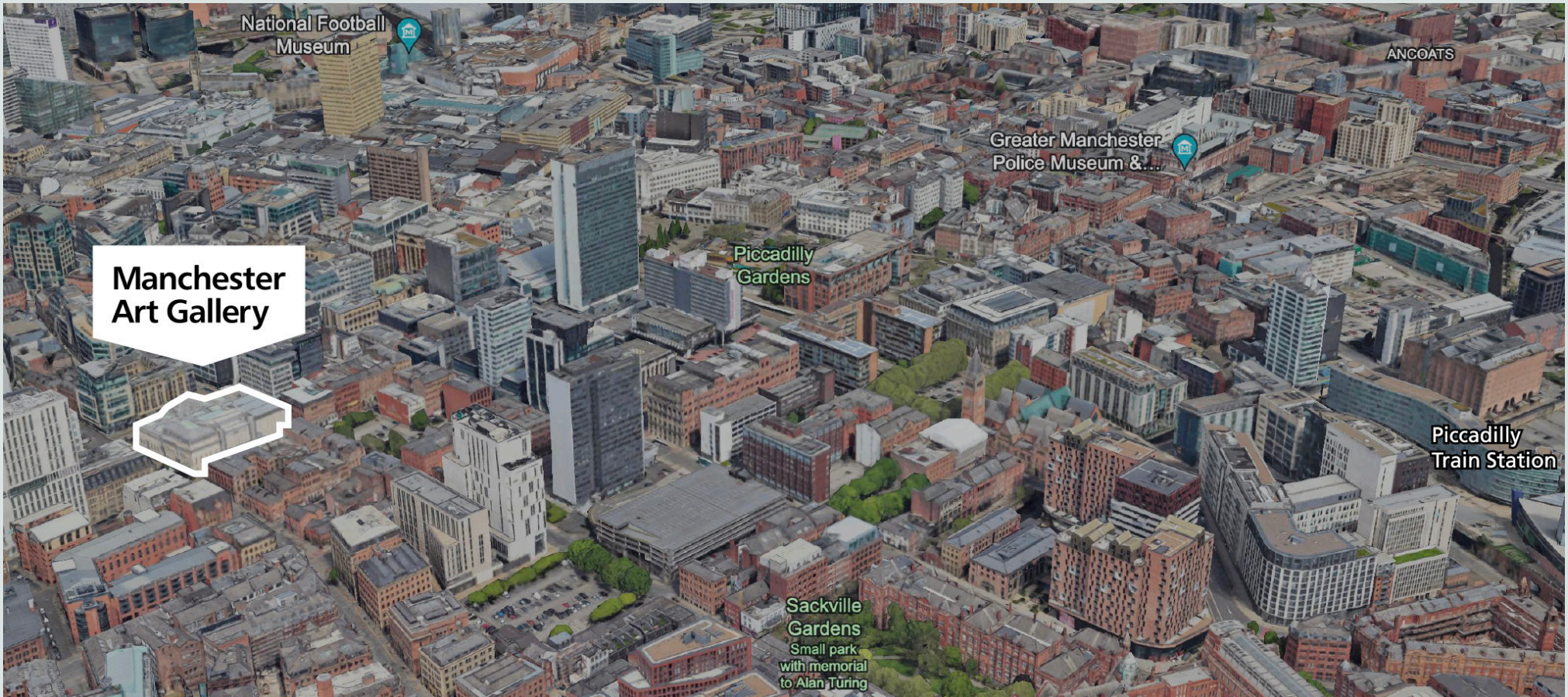


## Why choose Manchester Art Gallery?

*"Manchester Art Gallery is a beautiful space, the staff are exceptionally good to work with and the food is delicious. The event we hosted was designed to support adult professional learning and the gallery provided a wonderful stimulus to support connection across the two days."*

By making a booking you are supporting the work of Manchester Art Gallery to make great art, exhibitions, learning and thinking happen.





[manchesterartgallery.org](http://manchesterartgallery.org)

Mosley Street, Manchester, M2 3JL

0161 235 8862

[eventsteam@manchester.gov.uk](mailto:eventsteam@manchester.gov.uk)

**Manchester Art Gallery**



MANCHESTER CITY COUNCIL

THE  
**GALLERY CAFÉ**

The gallery's official hotel sponsor

**The Alan**